

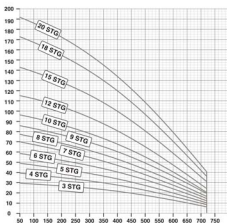
**KIWI PUMPS**

AN ISO 9001 COMPANY

Model Mixed Flow 50 Hz

**V-6-KVMC-10**

6" Borehole Submersible Pumps

Performance Curves  
HEAD IN MTRS.

Performance Chart

Model No.	Motor Kw	H.P.	Pump Stages	U.S. GPM	16	37	82	99	124	156	190
				M <sup>3</sup> /h	3.6	8.4	18.2	22.5	28.2	35.4	43.2
				LPM	60	140	310	375	470	590	720
				Head in Meters	28	27	23	21	16	11	6
V6KVMC10	2.2	3.0	3		38	36	31	28	21	14	8
V6KVMC10	3.0	4.0	4		48	46	39	35	26	18	10
V6KVMC10	3.7	5.0	5		57	55	46	42	32	21	12
V6KVMC10	4.5	6.0	6		69	64	54	49	37	25	14
V6KVMC10	5.6	7.5	7		76	73	62	56	42	28	16
V6KVMC10	5.6	7.5	8		85	81	69	63	47	31	18
V6KVMC10	7.5	10.0	9		95	91	77	70	53	35	20
V6KVMC10	7.5	10.0	10		114	109	92	84	63	42	24
V6KVMC10	9.3	12.5	12		142	137	116	105	78	53	30
V6KVMC10	11.2	15.0	15		171	164	139	126	95	63	36
V6KVMC10	13.0	17.5	18		190	182	154	140	105	70	40
V6KVMC10	124.9	20.0	20								

**KIWI PUMPS**

10, Samrat Industrial Area, Gondal Road,

Rajkot-360 004 INDIA Tel : 2372564, 2386381 Fax : +91-281-2371219

E-mail : [info@kiwipumps.com](mailto:info@kiwipumps.com) [www.kiwipumps.com](http://www.kiwipumps.com)

This literature is not a complete to product usage. Further information is available from your Kiwi dealer, Kiwi Customer Service Centre and from the relevant product installation and Operating Instructions. This data sheet must be read in conjunction with the relevant product installation and Operating Instructions and all applicable statutory requirements. Product specifications may change without notice.

**KIWI PUMPS**

AN ISO 9001 COMPANY

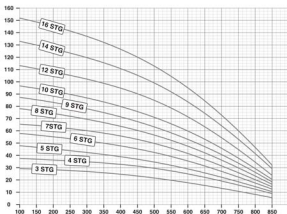
Model Mixed Flow 50 Hz

**V-6-KVMC-12**

6" Borehole Submersible Pumps

Performance Curves

HEAD IN MTRS.



Performance Chart

Model No.	Motor Kw	H.P.	Pump Stages	Head in Meters								
				U.S. GPM	21	42	114	135	172	197	225	
				M <sup>3</sup> /h	4.8	9.6	25.8	30.6	39	44.7	51	
				LPM	80	160	430	510	650	745	850	
V6KVMC12	3.0	4.0	3		28	27	23	21	16	11	6	
V6KVMC12	3.7	5.0	4		38	36	31	28	21	14	8	
V6KVMC12	4.5	6.0	5		48	46	39	35	26	18	10	
V6KVMC12	5.6	7.5	6		57	55	46	42	32	21	12	
V6KVMC12	5.6	7.5	7		66	63	53	49	38	24	14	
V6KVMC12	7.5	10.0	8		76	73	62	56	42	28	16	
V6KVMC12	7.5	10.0	9		85	82	69	63	47	32	18	
V6KVMC12	9.3	12.5	10		95	91	77	70	53	35	20	
V6KVMC12	11.2	15.0	12		114	109	92	84	63	42	24	
V6KVMC12	13.0	17.5	14		133	127	108	98	74	49	28	
V6KVMC12	14.9	20.0	16		151	146	123	112	84	56	32	

**KIWI PUMPS**

10, Samrat Industrial Area, Gondal Road,  
 Rajkot-360 004 INDIA Tel : 2372564, 2386381 Fax : +91-281-2371219  
 E-mail : [info@kiwipumps.com](mailto:info@kiwipumps.com) [www.kiwipumps.com](http://www.kiwipumps.com)

This literature is not a complete to product usage. Further information is available from your Kiwi dealer, Kiwi Customer Service Centre and from the relevant product installation and Operating Instructions. This data sheet must be read in conjunction with the relevant product installation and Operating Instructions and all applicable statutory requirements. Product specifications may change without notice.

**KIWI PUMPS**

AN ISO 9001 COMPANY

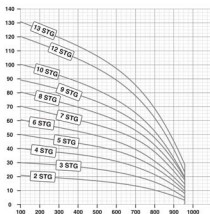
Model Mixed Flow 50 Hz

**V-6-KVMC-15**

6" Borehole Submersible Pumps

Performance Curves

HEAD IN MTRS.



Performance Chart

Model No.	Motor Kw	H.P.	Pump Stages	U.S. GPM	42	89	159	174	206	232	254
					M <sup>3</sup> /h	20.1	36	39.6	46.8	52.8	57.6
V6KVMC15	2.2	3.0	2	LPM	160	335	600	660	780	880	960
V6KVMC15	3.7	5.0	3	Head in Meters	20	18	15	14	11	7	4
V6KVMC15	4.5	6.0	4		29	27	23	21	16	11	6
V6KVMC15	5.6	7.5	5		39	36	31	28	21	14	8
V6KVMC15	7.5	10.0	6		49	46	39	35	26	18	10
V6KVMC15	7.5	10.0	7		59	55	46	42	32	21	12
V6KVMC15	9.3	12.5	8		69	64	54	49	37	25	14
V6KVMC15	11.2	15.0	9		79	73	62	56	42	28	16
V6KVMC15	11.2	15.0	10		97	91	77	70	53	35	20
V6KVMC15	13.0	17.5	12		118	109	92	84	63	42	24
V6KVMC15	14.9	20.0	13		128	118	100	91	68	46	28

**KIWI PUMPS**

10, Samrat Industrial Area, Gondal Road,

Rajkot-360 004 INDIA Tel : 2372564, 2386381 Fax : +91-281-2371219

E-mail : [info@kiwipumps.com](mailto:info@kiwipumps.com) [www.kiwipumps.com](http://www.kiwipumps.com)

This literature is not a complete to product usage. Further information is available from your Kiwi dealer, Kiwi Customer Service Centre and from the relevant product installation and Operating Instructions. This data sheet must be read in conjunction with the relevant product installation and Operating Instructions and all applicable statutory requirements. Product specifications may change without notice.

**KIWI PUMPS**

AN ISO 9001 COMPANY

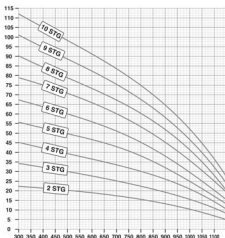
Model Mixed Flow 50 Hz

**V-6-KVMC-20**

6" Borehole Submersible Pumps

Performance Curves

HEAD IN MTRS.



Performance Chart

Model No.	Motor Kw	H.P.	Pump Stages	U.S. GPM	79	165	206	225	259	284	304
				M <sup>3</sup> /h	18	37.5	46.8	51	58.8	64.5	69
				LPM	300	625	780	850	980	1075	1150
V6KVMC20	3.0	4.0	2	Head in Meters	22	18	15	14	11	7	5
V6KVMC20	4.5	6.0	3		34	27	23	21	16	11	8
V6KVMC20	5.6	7.5	4		45	36	31	28	21	14	11
V6KVMC20	7.5	10.0	5		56	46	39	35	26	18	13
V6KVMC20	9.3	12.5	6		67	55	46	42	32	21	16
V6KVMC20	11.2	15.0	7		78	64	54	49	37	25	19
V6KVMC20	11.2	15.0	8		90	73	62	56	42	28	21
V6KVMC20	13.0	17.5	9		102	82	69	63	49	32	24
V6KVMC20	14.9	20.0	10		112	91	77	70	53	35	27

**KIWI PUMPS**

10, Samrat Industrial Area, Gondal Road,  
 Rajkot-360 004 INDIA Tel : 2372564, 2386381 Fax : +91-281-2371219  
 E-mail : info@kiwipumps.com www.kiwipumps.com

This literature is not a complete to product usage. Further information is available from your Kiwi dealer, Kiwi Customer Service Centre and from the relevant product installation and Operating Instructions. This data sheet must be read in conjunction with the relevant product installation and Operating Instructions and all applicable statutory requirements. Product specifications may change without notice.

**KIWI PUMPS**

AN ISO 9001 COMPANY

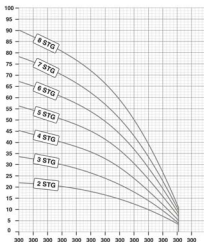
Model Mixed Flow 50 Hz

**V-6-KVMC-25**

6" Borehole Submersible Pumps

Performance Curves

HEAD IN MTRS.



Performance Chart

Model No.	Motor Kw	H.P.	Pump Stages	U.S. GPM	58	122	185	217	283	320	346
				M <sup>3</sup> /h	13.2	27.6	42	49.2	64.2	72.6	78.6
				LPM	220	460	700	820	1070	1210	1310
V6KVMC25	3.7	5.0	2	Head in Meters	22	20	18	16	12	8	3
V6KVMC25	0.4	0.50	3		34	30	26	24	18	12	4
V6KVMC25	7.5	10.0	4		45	40	35	32	24	16	5
V6KVMC25	9.3	12.5	5		56	50	44	40	30	20	7
V6KVMC25	11.2	15.0	6		67	60	53	48	36	24	8
V6KVMC25	13.0	17.5	7		78	70	62	56	42	28	9
V6KVMC25	14.9	20.0	8		90	80	70	64	48	32	11

**KIWI PUMPS**

10, Samrat Industrial Area, Gondal Road,

Rajkot-360 004 INDIA Tel : 2372564, 2386381 Fax : +91-281-2371219

E-mail : [info@kiwipumps.com](mailto:info@kiwipumps.com) [www.kiwipumps.com](http://www.kiwipumps.com)

This literature is not a complete to product usage. Further information is available from your Kiwi dealer, Kiwi Customer Service Centre and from the relevant product installation and Operating Instructions. This data sheet must be read in conjunction with the relevant product installation and Operating Instructions and all applicable statutory requirements. Product specifications may change without notice.

**KIWI PUMPS**

AN ISO 9001 COMPANY

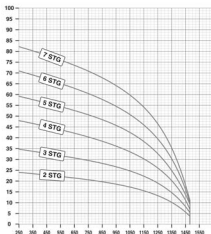
Model Mixed Flow 50 Hz

**V-6-KVMC-30**

6" Borehole Submersible Pumps

Performance Curves

HEAD IN MTRS.



Performance Chart

Model No.	Motor Kw	H.P.	Pump Stages	U.S. GPM	74	159	256	291	333	365	388
				M <sup>3</sup> /h	16.8	36	58.2	66	75.6	82.8	88.2
V6KVMC30	4.5	6.0	2	LPM	280	600	970	1100	1260	1380	1470
				Head in Meters	24	20	18	16	12	8	4
					35	30	26	24	18	12	5
					47	40	35	32	24	16	7
					59	50	44	40	30	20	9
					71	60	53	48	36	24	11
					82	70	62	56	42	28	12
V6KVMC30	7.5	10.0	3								
V6KVMC30	9.3	12.5	4								
V6KVMC30	11.2	15.0	5								
V6KVMC30	13.0	17.5	6								
V6KVMC30	14.9	20.0	7								

**KIWI PUMPS**

10, Samrat Industrial Area, Gondal Road,

Rajkot-360 004 INDIA Tel : 2372564, 2386381 Fax : +91-281-2371219

E-mail : [info@kiwipumps.com](mailto:info@kiwipumps.com) [www.kiwipumps.com](http://www.kiwipumps.com)

This literature is not a complete to product usage. Further information is available from your Kiwi dealer, Kiwi Customer Service Centre and from the relevant product installation and Operating Instructions. This data sheet must be read in conjunction with the relevant product installation and Operating Instructions and all applicable statutory requirements. Product specifications may change without notice.